

CYLINDER EQUIPMENT / SİLİNDİR EKİPMANLARI

APB and UPB mounted on SR, SRA, DA, DAA cylinders are fixed to the hydraulic system to be operated easily from its upper and lower pin connections.

The square block mountable on the cylinder's throat thread can be combined with a body desired thereby it can be used as a specific applications and presses.

A rounded bottom plate expands the lower surface area, allowing cylinders to work more evenly so that the force applied will spread over the plate's body to prevent overturns.

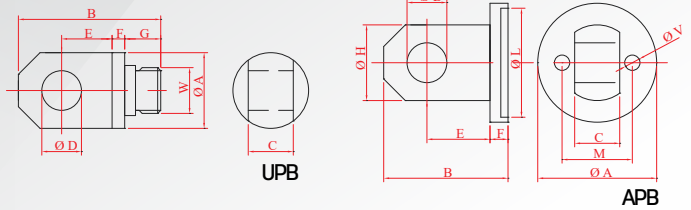
SR, SRA, DA, DAA tipindeki silindirlerle kullanılabilen APB ve UPB silindire montajları böylece alt ve üst pim bağlantılarıyla kolaylıkla bütünüleşerek çalıştırılacağı sisteme bağlanır.

Kare blok, silindirin boğaz dişine monte edilerek istenilen gövdeye takılabilir.

Yuvarlak alt ayak, alt yüzey alanını genişleterek silindirin daha dengeli çalışmasını sağlar böylece uygulanan kuvvet ayağın gövdesine yayılmış olur ve devrilme engellenir.

Clevis / Mafsal

APB-XX/UPB-XX

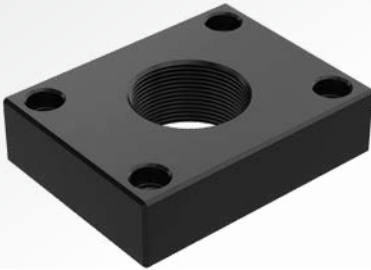


700 BAR

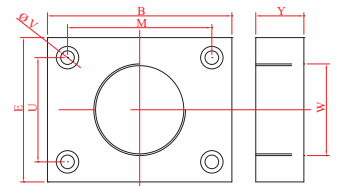
Type Tip	Model Number Model Numarası	Cylinder Capacity Silindir Kapasitesi	Dimensions / Boyutlar [mm]												
			A	B	C	D	E	F	G	H	L	M	V	W	
Alt Bottom	APB-05	5	48	50	14	16	25	8	-	28	42	28	7	-	
	APB-10	10	66	70	25	22	35	10	-	42	60	39	9	-	
	APB-20	20	102	105	35	30	50	15	-	60	90	65	12	-	
Üst Top	UPB-05	5	28	55	14	16	19	7	13	-	-	-	-	3/4-16	
	UPB-10	10	42	79	25	22	28	7	20	-	-	-	-	1-8	
	UPB-20	20	60	100	35	30	38	10	20	-	-	-	-	1-8	

Mounting Flange / Bağlantı Flaşı

KP-XX



Model Number Model Numarası	Cylinder Capacity Silindir Kapasitesi	Dimensions / Boyutlar [mm]							
		E	B	Y	U	M	V	W	
KP-05	5	65	90	24	50	70	7	M40x1,5	
KP-10	10	95	130	30	70	100	9	W2 1/4"-14	
KP-20	20	150	200	40	110	160	13	W3 1/2"-12	
KP-30	30	160	220	40	120	170	15	W3 7/8"-12	
KP-50	50	220	300	40	160	230	21	W5 1/4"-12	



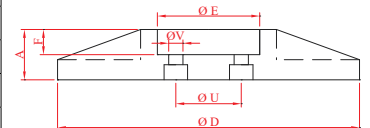
700 BAR

Base Plate / Taban Plakası

AP-XX



Model Number Model Numarası	Dimensions / Boyutlar [mm]					
	D	A	E	F	U	V
AP-05	125	20	43	10	28	7
AP-10	180	30	61	15	39	9
AP-20	225	45	91	20	65	11
AP-30	250	50	101	25	70	13
AP-50	325	70	136	35	110	13



700 BAR